



UNIPROMA
Uniting Science and Nature

Elastin is the riveting scaffolding of the muscle base. As a molecular hub, ARELASTIN® forms cascading functional units to instantly lift sagging skin, immediately diminishing lines and plumping and firming the skin.

Elastin, as the skeletal support structure of the skin, has become the new trend in anti-aging worldwide!

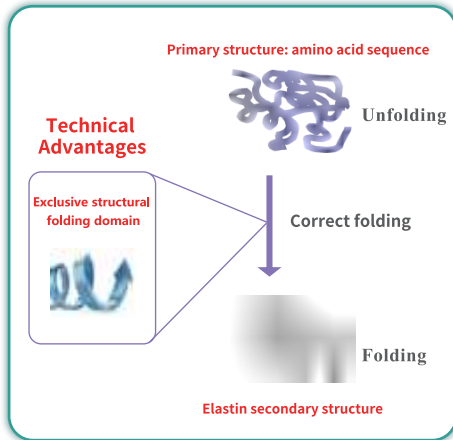
The anti-aging “super star” who broke the ceiling

ARELASTIN®

ARELASTIN®: A Star in Anti-aging Technology

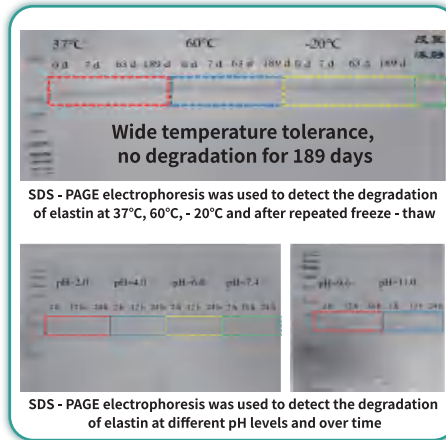
The global manufacturer with this unique structure

The unique β -spiral secondary structure determines the activity of elastin



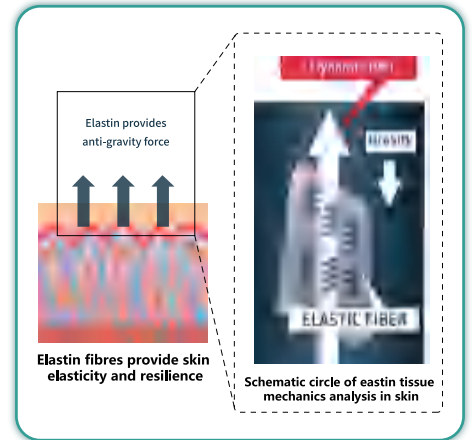
Maintains stable activity

Highly stable, resistant to cold, heat, acid and alkali

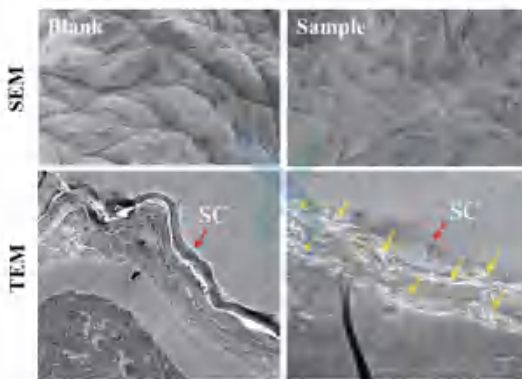


Dramatic immediate + Long-lasting anti-ageing effect

Anti-Gravity, instant lifting and firming, elasticity



Barrier penetration test



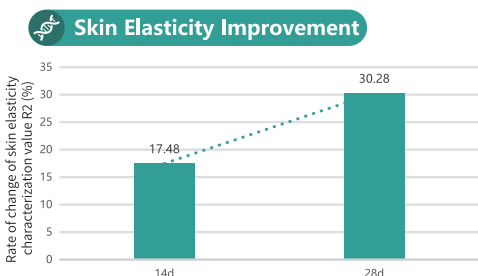
ADI's multi-phase transdermal technology gently and reversibly regulates the microstructure of the stratum corneum, opening its channels to facilitate protein penetration. Instantly reduces the appearance of fine lines around the eye, effectively rejuvenating the area.

Human efficacy experiment

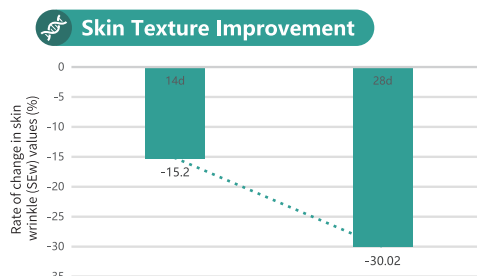


ARELASTIN® instantly fills in fine lines around the eyes, effectively rejuvenating the area around the eyes with a single microneedle introduction or a single application of the eye patch.

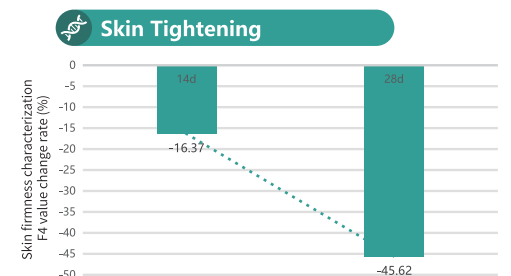
Third-Party Efficacy Evaluation (Showing Significant Increases in Skin Elasticity, Firmness, and Wrinkle Reduction)



After 14 and 28 days of using ARELASTIN®, skin elasticity (R2 value) increased by 17.48% and 30.28%, respectively, compared to baseline.



After 14 and 28 days of using ARELASTIN®, participants showed a 15.2% and 30.02% improvement in SEW values, respectively, compared to baseline. (Consider explaining what "SEW" stands for.)



After 14 and 28 days of using ARELASTIN®, the F4 value (obtained from facial skin chromatogram analysis) improved by 16.37% and 45.62%, respectively, compared to baseline.